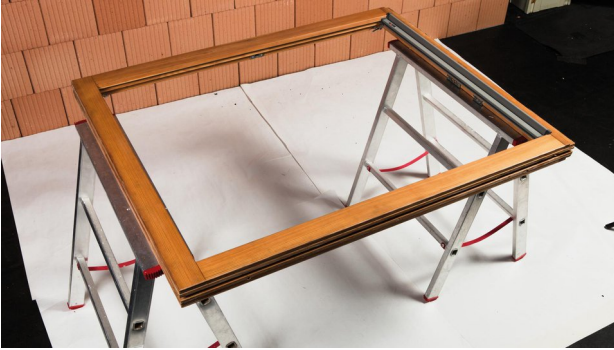


Installation instructions **CONTEGA[®]SOLIDO EXO-D**

Installation steps: 1. Before the window is installed



1. Masonry or timber structure

CONTEGA SOLIDO EXO-D is applied before the window is installed. The frame is laid out flat with the exterior side facing up.



2. Stick to the side of the frame

Remove the single release film strip on the printed side, position the tape on the side of the frame and then gradually stick in place. The printed side of the tape must be facing the window (upwards) here. Rub firmly using the pro clima PRESSFIX application tool to secure the adhesive bond.



3. Preparation of corners

Allow an additional loop of CONTEGA SOLIDO EXO-D of about 2 cm (3/4") in the corner area (length of the corner diagonal of the joint) and stick it in the form of a corner fold.



4. Stick the tape all around the window frame

Stick the tape to the side of the frame all around. When finished, cut the tape, allowing approx. 5 cm (2") of an overlap. Remove the release film from the start of the tape that is already fastened in place in the overlap area, and stick the end of the tape in place. Ensure that there is uninterrupted windtightness when sticking the tape here.



5. Install the window and insulate the joint

Fold in the CONTEGA SOLIDO EXO-D and install the window professionally. Use a suitable fastening system. Fill in the joint with a suitable approved insulation material, leaving no cavities.



6. Stick CONTEGA SOLIDO EXO-D onto the reveal and rub into place

Remove the release film strip on the membrane side (unprinted side) and gradually stick the tape in place on the reveal. Leave slack for expansion so as to allow for relative motion between components. Rub firmly using the pro clima PRESSFIX application tool to secure the adhesive bond. Install the sub-sill flashing (EXTOSEAL ENCORS).

Installation steps: 2. Window already installed



1. Window in masonry or timber structure

The window is already installed. CONTEGA SOLIDO EXO-D is to be applied subsequently to the fitted window.



2. Create a sub-sill flashing

First create a sub-sill flashing as a second waterproof layer using the EXTOSEAL ENCORS sealing adhesive tape.



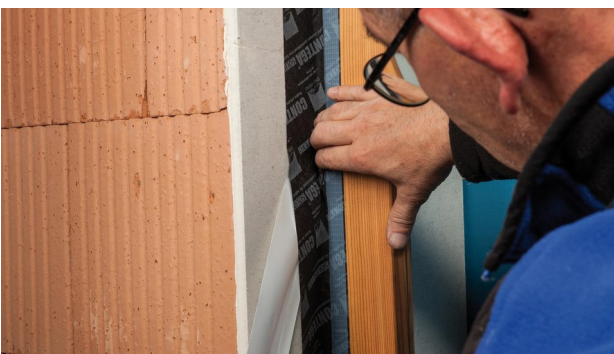
3. Cut the CONTEGA SOLIDO EXO-D window-sealing tape

Add approx. 4 cm (1 5/8") to the height of the frame and cut this length of CONTEGA SOLIDO EXO-D.



4. Stick to the frame

Remove approx. 5-10 cm (2" - 4") of the narrow release film strip on the membrane side (unprinted side). Continue the tape around the corner and gradually stick it in place all around the window.



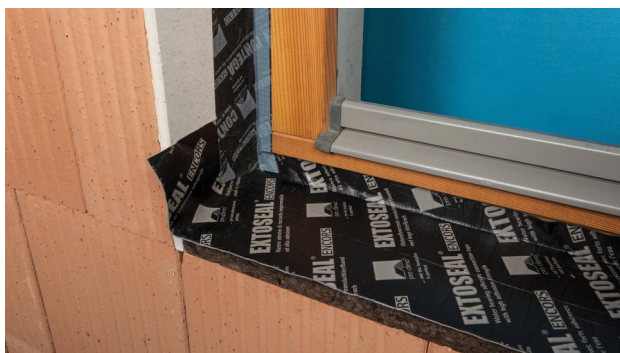
5. Stick to the reveal, allowing for slack

Remove the second (wide) release film strip and gradually stick the tape in place on the reveal. Start sticking the reveal in the corner area. Leave slack for expansion so as to allow for relative motion between components.



6. Stick the corners and all around the window

Continue sticking the rest of the window (frame and reveal) in the same manner. Ensure that the corners are stuck over with at least 2 cm (3/4") of an overlap. The adhesive bond must be windtight and resistant to driving rain all around.



7. Stick to the sub-sill flashing

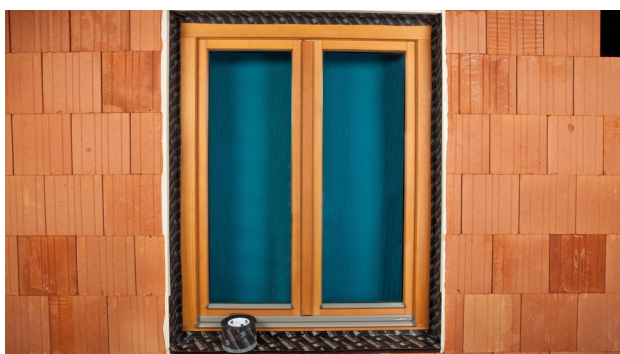
Guide CONTEGA SOLIDO EXO-D from the frame and reveal onto the sub-sill flashing and create a windtight, water-resistant adhesive bond that is resistant to driving rain here too.



8. Rub to secure the adhesive bond

Rub the tape firmly into place on the frame and reveal using the pro clima PRESSFIX application tool.

Tip: The width of the application tool can be adapted as needed.



9. You're finished!

The windtight joint is now complete, and CONTEGA SOLIDO EXO-D can be plastered over.

Substrates

Clean subsurfaces before sticking. Uneven mineral subsurfaces may need to be levelled with a smooth finish. Adhesion to frozen surfaces is not possible. There must be no water-repellent substances (e.g. grease or silicone) on materials to be bonded. The width of the adhesive tape that is to be plastered over should generally not exceed 60 mm (2 3/8") or 50% of the soffit area. Detailed recommendations can be obtained from the relevant plaster producer. Subsurfaces must be sufficiently dry and stable.

Permanent adhesion is achieved on all pro clima exterior membranes and on other underlay and breather (WRB) membranes (e.g. those made of PP and PET). Adhesion can be carried out on planed and painted wood, hard plastics, hard wood-based panels (chipboard, OSB and plywood panels), metal (e.g. pipes, windows etc.), rigid foam insulation materials that can be plastered over, and on mineral subsurfaces such as concrete and masonry.

The best results in terms of structural stability are achieved on high-quality subsurfaces. It is your responsibility to check the suitability of the subsurface; adhesion tests are recommended in certain cases. Pre-treatment with TESCON PRIMER is recommended in the case of subsurfaces with insufficient stability.

General conditions

The bonds should not be subjected to tensile strain.

Rub the adhesive tapes firmly to secure the adhesive bonds. Ensure that there is sufficient resistance pressure.

Seals that are windproof and resistant to driving rain can only be achieved if the sealing tape is installed free of folds and breaks.

When plastering, please observe the recommendations of the plaster manufacturer for non-absorbent subsurfaces. A bonding course may be necessary.

The information provided here is based on practical experience and the current state of knowledge. We reserve the right to make changes to the recommended designs and processing or to make alterations due to technical developments and associated improvements in the quality of our products. We would be happy to inform you of the current technical state of the art at the time you use our products.

Further information about installation and design details is available in the pro clima planning documentation. If you have any questions, please contact [pro clima Technical Support](<https://proclima.com/service/technical-support>).

MOLL**bauökologische Produkte GmbH**

Rheintalstraße 35 - 43

D-68723 Schwetzingen

Phone: +49 (0) 62 02 - 27 82.0

E-mail: info@proclima.com